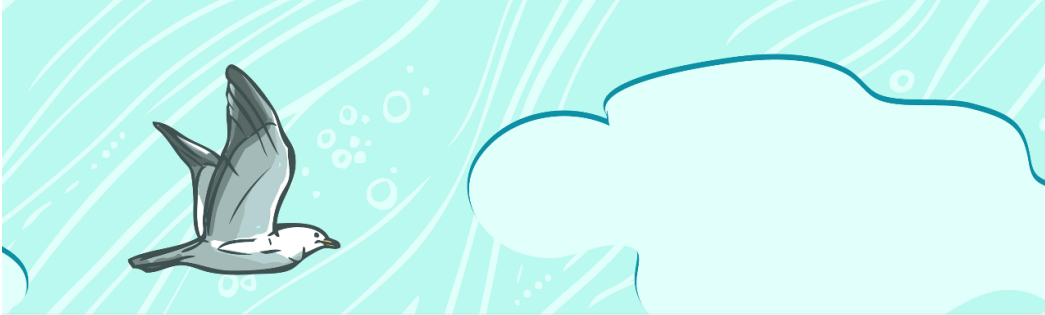


Delta Christian School 2022-2023

Return to School Guide

V. August 28, 2022



Delta Christian School 2022-2023

Anchored in Christ

Hebrews 6:19



"We have this hope as an anchor for the soul, firm and secure."



Welcome back, Dolphins!

We're looking forward to seeing everyone on Tuesday, September 6th starting at 8:45 AM. Students can arrive as early as 8:30. Our theme this year is "Anchored in Christ". We head into the year knowing we have a steadfast foundation in Christ and that in Him, we can face the new year and all that it will bring with joyful anticipation. Our theme song for the year is "Build a Boat", [which can be seen here](#).

To help provide a smooth transition, here is a summary of key information in welcoming students and families back the first week:

Class Lists

Class lists will be made available on the Parent Portal on Thursday, September 2nd. Information on how to access the Parent Portal will also be provided. Thank you for understanding that multiple factors are carefully considered in determining which class to place students in. Class lists cannot be changed. In the coming days, you will receive a brief welcome email from your child's classroom teacher before the first day of school.

Gradual Entry for Kindergarten (September 6th to 16th)

K students will be dismissed at 12 PM from September 6th to 16th. K parents, you may pick students up at the Kiss & Go or park on the street and meet your children at the K entrance.

School Bus During Gradual Entry: The bus will be available for the Richmond drop-off during the two-week gradual entry (one stop at Trinity Pacific Church). However, the bus will not be available for the Delta bus route for the two-week gradual entry's early dismissal.

After-School Care During Gradual Entry: After-school care will be provided to registered K families through the two-week gradual entry period. This option is not available for families not registered for after-school care.

School Bus

Previous notification was sent to all families in the spring with details of key changes to our bus route. This includes a new West Richmond stop after school, the extension of the Delta route into Tsawassen, and the introduction of Community Stops in Delta (rather than door-to-door). Please refer to the [bus transportation page on the school's website for the most current times and locations](#).

After-School Childcare

We are excited to be introducing the [after-school childcare program](#) at Delta Christian School. Registration is full at the moment as we accommodate all the families that signed up in June. We will notify the community if spots are to open up. After-school care will start on Tuesday, September 6th and be made available on all early dismissal days and kindergarten gradual start. Becky Campbell and her team have done a wonderful job setting up a space to welcome students to. All families who signed up for the program will be receiving a phone call this week from Becky to confirm your attendance plan through term one. The program's final inspection from the Health Authority will be taking place on August 30th, so please continue to pray that all will go forward as planned.

Pick-Up and Drop-Off

With an increase in the number of families in the school, we will continue with the same drop-off and pick-up procedures. Our main goal is to provide safety for everyone and to avoid pushing onto 53rd St and especially Ladner Trunk. We encourage families to stagger your arrival to prevent an initial rush directly at dismissal. Coming 5 or 10 minutes after the bell is acceptable, but no later than 3:15 PM.



- Students may be dropped off at the school as early as 8:30 AM when staff supervision is present and the gate to the backfield is open. Students may not be left unsupervised prior to this time.
- Parents may accompany students to designated exterior doors, but not enter the building through student entrances.
- Doors to the building will be open at 8:37 AM for students to go to their classes
- Classes will start at 8:45 AM

Designated Entrance and Exit Doors

- | | |
|------------------------|--|
| • Kindergarten - Gr. 1 | East doors by Kiss & Go |
| • Gr. 2-3 | West doors (by outdoor hockey area) |
| • Gr. 4-5 | Central doors (by outdoor basketball courts) |
| • Gr. 6-7 | Intermediate stairs (by the main gate) |

Half Day Pick-Up Times

12:17-12:25 PM A-M pick-up time (2 minutes later than last year)

12:25-12:35 PM N-Z pick-up time

*Bus students depart from school at 12:20 PM

Full-Day Pick-Up Times

2:57 - 3:05 PM A-M pick-up window (2 minutes later than last year)

3:05 - 3:15 PM N-Z pick-up window

*Bus students depart from school at 3:00 PM

Mark Your Calendar - Upcoming Events

[Stay up to date with our calendar of events on the school's website.](#)

September 2022

5 Labour Day - school closed

6 First day of School - 12:15 PM dismissal

6-16 Gradual Entry for Kindergarten Students - 12:15 PM dismissal

15 Picture Day - Formal Uniform

15 Meet the Teacher Night 7:00 PM (in person)

19 First full day for Kindergarten students

27 Society Membership Orientation 7:00 PM

(Zoom)

29 DCS Orange Shirt Day

30 National Day for Truth and Reconciliation - school closed

Chapel

Parents are invited to join us for Chapel on Thursdays at 2:15 PM in the gym.

School Visitors

- Parent visits to the building are to be pre-arranged with staff for a clear purpose, such as volunteering or meeting with a teacher
- A daily health check must be completed prior to coming to the school
- All visitors to the school must enter through the school's main entrance
- Signing in and out at the office are required
- Hand sanitizing is required upon entering the building
- The school office is open for parents after student arrival (9:00 AM) and before student pick-up (2:50 PM) to deal with business matters
- Parent committee meetings (Education, PAC, Strategic Growth and Renewal, Community Engagement, etc.) may take place at the school with health and measures in place



Playground and Field After School

We will follow the same procedure as last year. The playground will be available starting at 3:05 PM with direct parent supervision. Parents may come and get your children from the tent area and walk towards the playground. The large gate will be closed at 3:15 PM when school supervision will no longer be available and the small gate door will be left open. Please remember to close and lock the small gate if you are the last to leave. It is greatly appreciated if all sport balls and equipment is collected and brought back to the covered area.

Parent Volunteering

We're looking forward to connecting families with volunteer opportunities again. One of our most significant needs is lunchtime supervision. Courtnay Mawhorter, Community Advancement Manager, will be sending out opportunities throughout the year that require different skillsets and levels of commitment. Each family is asked to commit to 12 hours of volunteering each year or contribute the Parent Participation fee. In order to volunteer within the school, a criminal record check must be conducted. Information on how to complete the criminal record check will be sent out soon from the office in the coming week.



COVID Guidance

Mandatory Health and Safety Measures

- Health checks are to be conducted by students and staff at the start of each school day
 - Click here to view the [daily health check](#) and the [K-12 Daily Health Check online tool](#)
- Hand washing / sanitizing is expected upon entry into the building and at scheduled times throughout the school day

Staying Home When Sick

Most communicable diseases experienced by students and staff within school settings may be managed by the individual/family and through routine preventative measures, such as staying home from school until well enough to participate in regular activities. [Please conduct a daily health check prior to coming to school each day.](#)

If you feel sick, stay home. If any member of your household or social group is sick, or thinks they might be sick, even if they are vaccinated, they should not be spending time in person with others. People who have symptoms should refer to the [COVID-19 testing information](#) to determine if testing is appropriate and follow self-isolation guidelines.

Communications and Protecting Personal Privacy

Medical Health Officers play the lead role in determining if, when and how to communicate information regarding increased communicable disease activity within a school. Public health has encouraged schools to routinely communicate to their school community the need to follow any recommended public health measures, practice health awareness, and to stay home when sick. To protect personal privacy and to support accuracy, schools should exercise caution in providing communicable disease notifications beyond when they are recommended by public health.

Communicable Disease Activity at School

Most communicable diseases experienced by students and staff within school settings may be managed by the individual/family and through routine preventative measures, such as staying home from school until well enough to participate in regular activities. Resources are available to support management of routine communicable diseases, including HealthLink BC, the BCCDC Guide to Common Childhood Diseases, the Sneezes and Diseases website, and other school health resources hosted on health authority webpages (Vancouver Coastal Health; Fraser Health; Interior Health; Island Health; Northern Health). Public health may become directly involved if certain reportable diseases, such as measles, are identified where there are effective interventions available to prevent further spread and protect against severe disease. Additional time-limited public health measures may also be implemented at the discretion of the local Medical Health Officer or the Provincial Health Officer in response to broader risk of communicable disease transmission in the community.

Vaccines

Vaccines are important tools to protect against many serious communicable diseases. Vaccination protects from serious illness due to COVID-19 and is the most effective way to reduce the impact of COVID-19 on our communities. All COVID-19 vaccines approved for use in Canada protect against serious complications, including from the omicron variant. It is important to get all recommended vaccine doses to get the most effective protection against serious cases of COVID-19. People 6 months and older are eligible for COVID-19 vaccines. More information about COVID-19 vaccines is available from the BCCDC website. Students and staff are also encouraged to ensure they are up to date on all recommended vaccines for other communicable diseases, including COVID-19 vaccines.

What To Do When Sick

Staff, students, or other persons who are exhibiting new [symptoms of illness](#) (including symptoms of COVID-19 or gastrointestinal illness) should stay home and follow the BCCDC guidance outlined below:

If the person is experiencing COVID-19 symptoms



BCCDC Guidance

The [When to Get Tested for COVID-19 resource](#) or the [B.C. Self-Assessment Tool](#) provides more information on whether you should get a test for COVID-19. Those unsure or concerned about their symptoms should connect with a health care provider or call 8-1-1.

Staff, children, or other persons in the school setting who test positive for COVID-19 should follow the guidance on the BCCDC website as to how long they should self-isolate. They can return to school when they no longer need to self-isolate as long as symptoms have improved, and they are well enough to participate in regular activities. Schools should not require a health care provider note (e.g., a doctor's note) to confirm the health status of any individual, beyond those required to support medical accommodation as per usual practice.

If the person is experiencing other symptoms, isn't recommended to take a COVID-19 test (most people) or tests negative for COVID-19

BCCDC Guidance

Staff, children, or other persons can attend school if their symptoms are consistent with a previously diagnosed health condition (e.g., seasonal allergies) or symptoms have improved enough to where they feel well enough to return to regular activities and their fever has resolved without the use of fever-reducing medication (e.g., ibuprofen, acetaminophen). Information specific to COVID-19 is available from BCCDC.

Students, staff, and other adults should follow public health guidance, BCCDC guidance, and/or the recommendation of their health care provider when they are sick.

What To Do When Sick at School/Work BCCDC Guidance

If a staff member, student, or other person develops symptoms of illness at school and is unable to participate in regular activities, they should be supported to go home until their symptoms have improved. Appropriate infection control precautions should be taken while the person is preparing to leave the school premises, including use of appropriate hand hygiene and cleaning/disinfection of surfaces soiled with bodily fluids. They may use a mask if they are experiencing respiratory symptoms.

School administrators should also establish procedures for students and staff who become sick while at school/work.

- Continue to have non-medical masks on hand for those who have forgotten theirs but would like to wear one (for both the person who is sick and for those who may be assisting them).
- Make arrangements for the student/staff to go home as soon as possible (e.g., contact student's parent/caregiver for pick-up).
- Some students or staff may not be able to be picked up immediately. As such, schools should have a space available where the student or staff can wait comfortably and are separated from others. Younger children must be supervised when separated. Supervising staff can wear a non-medical mask, and should avoid touching bodily fluids as much as possible and practice diligent hand hygiene.
- Staff responsible for facility cleaning should clean and disinfect the surfaces/equipment which the person's bodily fluids may have been in contact with while they were ill (e.g., their desk in a classroom, the bathroom stall they used, etc.) prior to the surfaces/equipment being used by others. Cleaning/disinfecting the entire room the person was in (a "terminal" clean) is not required in these circumstances.
- Request that the individual stay home until symptoms have improved and they feel well enough to participate in all school-related activities.